



tHEATRENETWORK

**THEATRE NETWORK PRESENTS
IN ASSOCIATION WITH MARY J. DAVIS & MBL PRODUCTIONS
AND LIVE & IN COLOR
THE WORLD PREMIERE OF:**

WITH BELLS ON! THE MUSICAL

**Book by Tommy Newman & Devanand Janki
Music & Lyrics by Tommy Newman
Based on the play by Darrin Hagen**

There will be no intermission

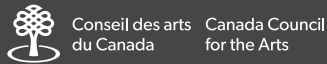
MAINSTAGE SEASON PARTNER:



PRODUCTION PARTNERS:



SEASON 49 PARTNERS:



Playbill Publisher: Pioneer Press LTD

Graphic Design: Chris Peters | Season Design: Crystal Eyo



WITH BELLS ON! THE MUSICAL

By Tommy Newman & Devanand Janki

Presented in association with Mary J. Davis & MBL Productions
and Live & In Color

Book by: Tommy Newman & Devanand Janki

Music & Lyrics by: Tommy Newman

Based on the play by: Darrin Hagen

Featuring: Zachary Parsons-Lozinski (aka Lilith Fair) and Thomas Jones

Director and Choreographer: Devanand Janki

Music Direction/Keyboard: Ryan Sigurdson

Set & Costumes: Brianna Kolybaba | **Lighting Design:** Ami Farrow

Production Manager: Brian Maxwell | **Stage Manager:** Gina Moe

Drums: Cooper Ray | **Guitar:** Keaton Smith | **Bass:** Andreas Wegner

Liza Minnelli vocal impression by Christine Pedi

CNC cutting services provided by Charlie Victor Woodcraft

Venue & Lighting Technician: Ashley Carter

Carpenter & Running Crew: Will Chichak

Carpenter & Lighting: Nicodemus Hein, Jadey Capaldo

Audio Technician: Amelia Chan | **Design Assistant:** Elise Leske

Apprentice Stage Manager/Assistant Set & Costumes Designer:

Andraya Diogo

TREATY ACKNOWLEDGEMENT

We acknowledge and honour that the Roxy theatre and our city is located on Treaty 6 land, which is traditional territory of the Nêhiyawak and a traditional home to the Niitsitapi, Nakota, Dene, and Anishinaabe, as well as an important trading centre and home to the Métis people of Alberta. We also recognize and are honoured to be Treaty people; therefore, we seek to uphold the spirit and intent of Treaty and strive to live in good relations based upon the Treaty principles of Peace, Friendship, and Respect.



Joni Mitchell's Songs of a Prairie Girl

Created and Directed
by Jim Guedo, 2023



Sexual Misconduct of the Middle Classes

by Hanna Moscovitch,
2023



POCHSY IV

Written & Performed
by Karen Hines,
2023

WELCOME TO THE ROXY!

We believe that live theatre should be unexpected and surprising. We want you to be safe and comfortable here but we also want to provide you with an unpredictable and exciting experience. Any of the productions you may see here could contain:

- **Coarse language or nudity**

Blame it on the Playwright

- **Violence**

The actors are always safe

- **Loud or abrupt noise**

Plays can have "jump scares" just like the movies

- **Flashing or bright lights**

The actors can't see you but they look great

- **Fog or haze**

Safe and produced from water

- **Difficult or challenging subject matter**

Cause we gotta talk about the tough stuff

If you have any questions on what you're about to see, please feel free to ask to our box office staff.

Photos: Left: L to R: Cayley Thomas, Christine MacInnis; photo by Ian Jackson. Centre: L to R: Gianna Vacirca, John Ulliyatt; photo by Eric Kozakiewicz. Right: Karen Hines; photo by Gary Mulcahey.



TIRAMISU BISTRO

The Things We Love

DINING EXPERIENCE

At Tiramisu, we believe in crafting an experience from the very first bite. From house-made pasta to house-made bread. Our pastas, burgers and pizzas are a testament to the artistry of Italian cuisine.

Elevate your evening with our exclusive Dome Dining. Enjoy a leisurely meal outdoors in a heated dome, setting the stage for an unforgettable night at the theater.



NEW SEATING

Renovations are complete!

Looking for a quick bite to eat ?
Come to our newly renovated bakery and market's sitting area!
We are now serving pizzas, sandwiches, charcuterie & salads, wine, cocktails and more.

ROXY DINING

Make your theatre night extra special with a 15% discount on all pre-show dining experiences!





ABOUT LIVE & IN COLOR CO-PRODUCER

Live & In Color is a creative incubator for new plays and musicals bound for commercial success, with a core mission of diversity and inclusion in all aspects of the theater industry for underrepresented artists. Live & In Color offers a range of development opportunities including readings, workshops of new work, and paid commissions in New York City and beyond. Our most sought after opportunity is a one-week workshop experience in the solitude of Salem, Connecticut where two new pieces are developed at the historic Bingham Camp every fall. Our work was most recently seen Off-Broadway with the premiere of *Little Girl Blue: The Nina Simone Musical*. Join our mission at liveandincolor.org. With *Bells On!* was developed in 2021. liveandincolor.org

ABOUT MBL PRODUCTIONS

DEVELOPER & CO-PRODUCER

MBL Productions & Mary J. Davis is a Tony Award Winning Producer for *The Inheritance* on Broadway. Additional Broadway credits include *A Strange Loop*, *Funny Girl*, *Mrs. Doubtfire*, *Six*, *Slave Play*, *Hadestown*, *Come From Away*, *Mean Girls*, and many more. Recently, Mary's Off-Broadway production company MBL Productions produced *Los Otros* by Michael John LaChiusa & Ellen Fitzhugh and *Fern Hill* by Michael Tucker at 59e59, starring John Glover, Jill Eikenberry, and Mark Lin Baker. Additional Off-Broadway productions include *Smart Blonde* starring Andréa Burns, *Goldie Max & Milk*, *Disaster!*, and many shows at Theatre Row and 59E59. While she no longer practices law professionally, she has continued her work with the ACLU. Mary has one daughter, Laura, a graduate of Rollins College. MBLProductions.net

HEARING ASSISTANCE AVAILABLE



The Nancy Power Theatre at The Roxy is equipped with the **Sennheiser MobileConnect** assistive listening system. This system works with the MobileConnect app on your smartphone device to give you a direct feed from our soundboard.

Follow the instructions below to connect or ask one of our staff for assistance or if you have any questions.



App Download

- Use with earbuds or Bluetooth-enabled hearing aids.
- Please ensure your device is otherwise on silent and that its light does not disturb other audience members.

Step 1: Download the MobileConnect app using the first QR code at left.



Join Wifi

Step 2: Join the hidden RoxySound wifi network using the second QR code at left.

Step 3: Select **Nancy Power Theatre** as your audio channel.

Step 4: Ensure your headphones are connected and toggle the slider and your device's volume to adjust the sound as desired.

23/24

No. 2

Ps

Phoenix Series



LAUGH YOUR SLEIGH BELLS OFF: GIRL BRAIN'S CHRISTMAS EXTRAVAGANZA

Written, directed and performed by
Alyson Dicey, Ellie Heath and Caley Suliak

DECEMBER 14 - 23, 2023
in the Lorne Cardinal Theatre



Tickets: \$25
Purchase tickets at theatrenetwork.ca

A CONVERSATION WITH THE WRITERS

DEVANAND JANKI AND TOMMY NEWMAN

Dev: When I first saw the Theatre Network production of Darrin Hagen's *With Bells On* way back in 2011, I was blown away by the charm, the whimsy, and the heart of his delightful play. Even then, it felt like it was primed to burst into song! Here was an entirely original story with characters who spoke to a diverse audience and still managed to capture the spirit of community and friendship that Christmas has come to mean for so many people. I immediately knew that it was perfect for musical adaptation, so I reached out to a new musical theatre writer I was working with at the time, Tommy Newman.

Tommy: Dev approached me in the summer of 2012 as we were working together on another project that was playing Off-Broadway. He shared Darrin's play with me, and I instantly fell in love with these characters. It was mythic. It was contemporary. It was utterly charming. It took the trope of elevator play, and it lifted it to the thirteenth floor. I was sold.

Dev: We had a few false starts before we could really get our adaptation rolling. We were both so busy, and it was hard to find time to begin the process of writing until we were both forced to stop and take stock of where we were.

Tommy: During the pandemic, Dev and I reconnected about this piece. We were both ready for something new, and we felt like there was an urgency in the moment for this particular kind of story.

Dev: The world would see a great deal of political scrutiny on the topic of drag and the queer community. Laws were being written to take away our rights— to outlaw the very essence of our self-expression.

Tommy: People were in pain, and communities were divided. It felt like we were regressing. It was and honestly still is a confusing time.

Dev: So we set out to find some semblance of peace in all of that through this show— to bring people together— to give them hope— to explore a story with conventional themes that was accessible to everyone, no matter their beliefs or their backgrounds.



Tommy: The play felt a little Dickensian. It was a world that seemed to be governed by unseen forces. These two people find themselves at a sort of purgatorial crossroads on Christmas Eve where they have to break their own personal curses before they can move on.

Dev: We expanded the character of Ted, explored Natasha's backstory, and we leaned into the fun, campy elements that made Darrin's play so buoyant and exciting.

Tommy: I was thrilled at the prospect of creating a musical world that felt like it was both familiar and completely original... one that could conjure the spirit of the season, but that felt contemporary and made sense to the heart of the play. The sound of bells inspired an entire musical throughline within the score. We were drawn to their pancultural significance as a symbol of new beginnings, which seemed to go along with both character's desires to ring out the old and ring in the new.

Dev: I was honored to have the opportunity to work on this iconic, queer character— a character who spoke deeply to me in my middle age. She is a work in progress. Like all of us. We are always changing, and life will always present new opportunities to reinvent ourselves.

Tommy: It's the same with Ted. We all have to recognize that we are little works in progress, and that the best thing we can do for each other is to see— to listen— to try to understand— and to become something new... together.

Dev: We are thrilled to be working with this team of incredible Canadian artists and are so overcome with gratitude at the chance to come back to the theatre where this play began its journey— and to my hometown— to bring this story to a new audience and an old one. At its core, *With Bells On* is about what we need most right now in the world— connection, love, and understanding, and we hope you fall in love with these characters and this story as much as we have.

2-PACK PASS

\$99, or \$93 for Students/Seniors 60+

Discover the joy of theatre, your way, with the Theatre Network Season 2-Pack Pass!

Take advantage of our 2-Pack Pass deal where you'll receive more than 25%-off our upcoming world premieres of *WITH BELLS ON! The Musical* and Ronnie Burkett's *Wonderful Joe!*

*Excludes Opening Night performances. Other conditions apply. Talk to the box office about upgrading your ticket to a Season Pass!

Visit theatrenetwork.ca/passes/ for more information and to purchase.



Co-located evidence #15
by Carolyn Campbell

MILLER

ART GALLERY

The Roxy is a proud home to three floors of art gallery walls, the Miller Art Gallery. Curated by Jared Tabler, the Peck Visual Arts Program focuses on championing the best in contemporary art and elevating the work of Canadian artists. Artists' exhibitions take place throughout the building on a rotating basis.

Visit theatrenetwork.ca/millerartgallery/ for more information.

Tickets go on sale
December 12, 2023
at 12PM!

WONDERFUL JOE

Created & Performed by Ronnie Burkett

APRIL 2 - 21, 2024

"Paint gold in the part of me that is broken. Let my faultline shine, these golden precious scars are fine, divine, and mine."

Nancy Power Theatre
Previews: April 2 & 3
Opening Night: Thu April 4
2-for-1 Tuesdays: April 9 & 16

****World Premiere****

Joe and his dog Mister lose their home, and facing separation, head into the world for one last grand adventure together. The world seems broken, but Joe sees magic in the mundane, beauty amidst brutality, and life in the lost and lonely. He and Mister encounter Mother Nature, Santa Claus, Jesus and the Tooth Fairy, witness a troupe of homeless players in a cardboard theatre, and show a disenfranchised teen how to jump over the moon in a playground rocket ship. A seemingly simple tale of a simple man, Wonderful Joe is a love letter to imagination, hope, and the art of filling broken hearts with gold.

THE UNWRAPPING OF 'WITH BELLS ON' – A DECADE-LONG THEATRICAL JOURNEY

DARRIN HAGEN

The journey of *With Bells On* started in 2009, when I sent a sketch of a fragment of an outline of an idea to the Stage One new play program at Lunchbox. Lucky for me, Caroline Russell-King met me and we discussed the idea and where it could go. It was chosen for some development, and soon I was working with three amazing Calgary theatre folk I had never met before.

The play started as an idea about two neighbours - one of them a very tall drag queen. There were scenes of them standing outside the elevator in their shared hallway. That's all I had at first. It was my friend Neon who made a joke about the elevator in my building as it clunked roughly to the ground floor - she said "You should write a play about this elevator."

While we were workshopping the drag queen / neighbour / elevator play, director Ian Prinsloo asked a question about one of my stage directions - it read, "She is sparkly and jangly, like a drag Christmas Tree." He asked "Why is she dressed as a Christmas tree". I replied "That



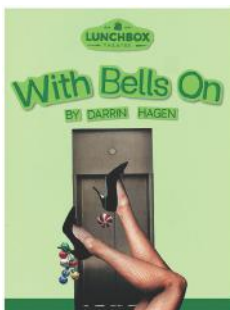
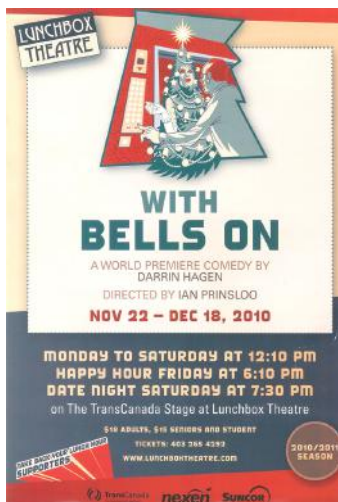
was a figure of speech. I didn't mean that literally."

And Ian asked "Why not?"

And then we all began to discuss why she would be dressed as a Christmas tree. And then I suddenly recalled the annual Christmas Queen pageant in Edmonton.

And then the whole play fell into place. And suddenly I - who doesn't really like Christmas at all - was writing my first Christmas play.

With Bells On has been produced 9 times since the world premiere in 2010, playing in Edmonton 4



times, in Calgary 3 times, in Kelowna, in Key West, Florida (directed by drag legend Christopher Peterson), and across the ocean in Ireland. Paul Welch, who played Natasha for 5 years in a row in Calgary and Edmonton - racked up an impressive 100 performances in those high heels.

This year, the original play returns to where it all began, as a brand-new production hits the Lunchbox Theatre stage in Calgary with a whole new team.

In 2014, Dev Janki, an Edmonton ex-pat (now living in New York) - tracked me down and emailed me about the possibility of turning *With Bells On* into a musical.

Which brings us to here and now, launching the next exciting chapter of this amazing ride.

It really has been the best gift I have ever received.

Special thanks to James Hamilton, Paul Welch, Stafford Perry, Ian Prinsloo, Caroline Russell-King, Anton deGroot, Norman J. MacDonald, Pamela Halstead, Mark Bellamy, Bradley Moss, Christopher Peterson and Neon.



TOMMY NEWMAN - BOOK, MUSIC, AND LYRICS

Tommy Newman is a published playwright, composer and lyricist from Alabama and a 2013 ASCAP Foundation Cole Porter Award Winner. Three of his shows have participated in the annual NAMT Festival in New York. He is a recipient of an Anna Sosenko Assist Trust Grant, and a 2014 Kennedy Center ACTF National Musical Theatre Award Winner. Productions include: *The Single Girl's Guide* with Gordon Greenberg, developed at The 5th Avenue Theatre in Seattle (2016), The Village Theatre in WA (2015), Capital Repertory Theatre (2013), and NAMT (2013). *Band Geeks!* (Published by MTI, Goodspeed Musicals, Human Race Theatre Co., Red Mountain Theatre, NAMT Fest '09). *Tinyard Hill* with Mark Allen (Theatreworks Silicon Valley, Red Mountain Theatre, Human Race Theatre, Goodspeed, NAMT Fest '07). Off Broadway: *We the People: America Rocks* (Theatreworks, USA, NY Times Critic Pick, Lortel Nomination 2010), *The Yellow Brick Road* with Jaime Lozano (TheatreworksUSA, NY Times Critic Pick) and *29* with Gaby Alter (NYU Steinhart, Troy University). Recent works: *The Teacher from the Black Lagoon and Other Stories* (Theatreworks, USA), *The Odyssey Suite*, *Savage*, *Jenny's Damned Ex*, and *With Bells On: The Musical*. He holds a BS in Music Education from Troy University and an MFA in Musical Theatre Writing from NYU Tisch. Tommy is currently a full-time professor with Troy University's Department of Theatre and Dance in Troy, AL. Read more about him at tommynewman.com.



DEVANAND JANKI - DIRECTOR, CHOREOGRAPHER, BOOK

Dev is the artistic director of Live & In Color, whose mission is to develop new works that promote and celebrate diversity. (liveandincolor.org). His career spans all facets of the performing arts, winning multiple awards and nominations. Credits: Off B'way: *Little Girl Blue - The Nina Simone Musical*; *Zanna, Don't!*; *Yellow Brick Road*; *Junie B. Jones*; *Cupid & Psyche*; *Henry & Mudge*; and *Skippyjon Jones*. Regional: *Wings of Ikarus Jackson*, *Barrio Grrrr!* (Kennedy Center), *The Rocky Horror Show*, *Xanadu* (Hangar Theatre), *Disney's Aladdin* (Chicago Shakespeare), *Man of La Mancha* (Maltz Jupiter Theatre), *The Full Monty*, *Songs for a New World* (Village Theatre) and *The Who's Tommy* (Flint Rep). Star-studded B'way concerts: *Funny Girl*, feat. Whoopi Goldberg, Sutton Foster, Idina Menzel and Kristin Chenoweth; Grammy-nominated concert of *Hair* starring Jennifer Hudson; 20th anniversary concert of *Dreamgirls*. Lincoln Center: *Amahl and the Night Visitors*, *Babes in Toyland*, and *Anything Goes in Concert* (assoc.). Nine years as artistic associate for Broadway Bares benefiting Broadway Cares/Equity Fights Aids. As a performer he has appeared on Broadway in *Miss Saigon*, *Cats*, *The King & I*, *Side Show*, and tours of *A Chorus Line* and *West Side Story*. Dev is thrilled to be back in his hometown where it all began. devanandjanki.com



DARRIN HAGEN - SOUND DESIGNER & PLAYWRIGHT, WITH BELLS ON

DARRIN HAGEN is an award-winning playwright, author, composer, performer, and Queer historian, and is also the artistic director of Guys In Disguise. He has created over 40 plays, and dozens of published essays and articles, many dealing with the history of sexual minorities in Alberta.

Plays by Darrin include his award-winning 1996 debut, *The Edmonton Queen* (published by Brindle & Glass Publishing, now in its fourth printing). Other published work includes *Tornado Magnet: A Salute to Trailer Court Women*. Other plays by Darrin are the Sterling-nominated *Buddy*, *Witch Hunt at the Strand*, *The Empress & The Prime Minister*, *Metronome*, *10 Funerals*, as well as the international hit *BitchSlap!*. Originally commissioned by Lunchbox Theatre in 2009, the original version of *With Bells On* has been produced as far away as Ireland and Key West, Florida, and is playing right now in Calgary for the 3rd time.

With his Guys In Disguise collaborator Trevor Schmidt he has co-created *Dragula*, *Triple Platinum*, *Flora & Fawna's Field Trip*, *Flora & Fawna Have Beaver Fever*, *Puck Bunnies*, *Psychobabble*, and the multi-award nominated musical *Klondykes*, as well as the popular award-winning *Orchard Crescent Trilogy: Prepare for the Worst*, *Don't Frown at the Gown*, and *Crack in the Mirror*.

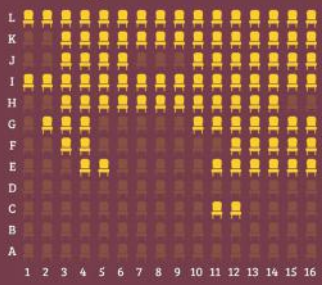
He has received 7 Sterling awards for his work in Edmonton theatre, and the AMPIA for Best Male Host for the series *Who's On Top?* In 2005 he was named one of 100 Edmontonians of the Century. In 2013 he was inducted into the Q Hall of Fame Canada for his contribution to Queer Canadian culture. He was recently named by the AFA as one of the 25 Most Influential Alberta artists in the last 25 years.



2023 SEAT SALE CAMPAIGN

IN SUPPORT OF THE ROXY CAPITAL CAMPAIGN

Nancy Power Theatre



Leave your mark on The Roxy and purchase a seat today! A \$500 donation will be recognized with a plaque on the seat in the Nancy Power Theatre (while supplies last) and helps to ensure that The Roxy will continue to be a vibrant and beautiful venue for years to come.

For the fine print & to purchase a seat, visit: <https://theatrenetwork.ca/seatsale>





ZACHARY PARSONS-LOZINSKI (AKA LILITH FAIR) - NATASHA

Artistic Director of 50% Fruit Productions, Zachary Parsons-Lozinski is perhaps better known as his drag persona, Lilith Fair. Lilith has been performing in nightclubs and cabaret venues internationally for over ten years! The 2016 winner of Alberta's Drag Superstar, Vue Weekly Magazine's "Best Local Comedian" for five consecutive years in a row (2013-2017), and most recently the recipient of the '22/'23 Sterling Award for "Outstanding Fringe Performance by an Individual" for her work in *The Pansy Cabaret* (Guys in Disguise). Credits with 50% Fruit include: *Bushes in the Basement*, *The Jayne Mansfield Holiday Special*, *Millennial Sex Witch* and *The House That F*cks* which opened Off-Broadway at the SoHo Playhouse as part of their Fringe Encore Series in 2022. Zachary currently lives in Calgary AB, where you can catch him as Lilith Fair every week at Twisted Element for *F*CK ME FRIDAYS* which features a curated selection of Alberta's finest drag talent! To keep up to date on Lilith's adventures, follow her on Instagram and X @LilithFairYYC - ENJOY THE SHOW!



THOMAS JONES- TED

Tom is beyond thrilled to be making his Theatre Network debut as part of this wonderful premiere. Thirty years ago Tom was roommates with TN's AD, Bradley Moss in a shared house full of Actors in Vancouver. Things have come full circle since those early Theatrical adventures. Tom has worked with many of Vancouver's most innovative theatre companies including the Electric Company, Boca del Lupo, Only Animal, Pi theatre, Touchstone Theatre and Axis Theatre.

Tom has also worked extensively in the interior of BC doing nine productions with Caravan Farm Theatre and a half a dozen puppet shows for Runaway Moon Theatre. He has been involved in dozens of original works in various styles such as Mask, Puppetry, Improv and Shadow Puppetry. He has toured throughout North America as well as Ireland, Europe and Australia.

Tom has played guitar and banjo in numerous bands, currently in a duo with Mike Victor called "Last Crows Standing". He has been touring his solo show *Woody Sed* about the life of Woody Guthrie since 2008.



RYAN SIGURDSON - MUSIC DIRECTOR

Ryan is an Edmonton-raised musical director now based in Toronto. A proud MacEwan Theatre Arts alumnus, he continued his studies with a Master of Music in Orchestral Conducting at the University of Cincinnati. Ryan has conducted the second national tour of Rodgers + Hammerstein's *Cinderella*, and played keyboard for the first national tour of *Anastasia*. Some favourite musical directing credits include ...*Spelling Bee* and *Forever Plaid* at the Mayfield Dinner Theatre in Edmonton, *Billy Bishop Goes To War* at the Citadel Theatre, and Teatro Live!'s original production of *Everybody Goes To Mitzi's* which he also co-wrote. He has studied musical theatre writing at the BMI Lehman Engels Musical Theatre Writing Workshop in New York. Ryan is currently a teacher at Sheridan College.



BRIANNA KOLYBABA - SET & COSTUMES

Brianna is a film, theatre & opera designer specializing in visual storytelling from stage to film set. Based in ᓃᓄᓇᑦᑲᓄᓇᑲᓄᓇᑲᓄᓇ (Amiskwaciwâskahikan, Treaty 6 Territory) Edmonton, Alberta Canada. An ever-morphing artist of the occasion, Brianna brings her passion for world-building. Select theatre credits include: set design; *Orphée+* (Edmonton Opera), set design; *The Marriage of Figaro* (Edmonton Opera), set design; *Mary's Wedding* (The Citadel Theatre), set & costume design; *The Innocence of Trees* (Theatre Network), set & costume design; *Mr Burns: A Post-electric Play* (You Are Here & Blarney Productions - Sterling Award win for Best Set Design), projection design; *Lake of the Strangers* (Naheyawin & Fringe Theatre - Sterling Award nomination for Best Multi-Media Design), co-costume design; National Canadian tours (2018 & 2019) of *Bears* (Punctuate! Theatre - Dora Award nomination for Best Costume Design).



fruit
loop

NEW YEAR'S EVE

20
24



DECEMBER 31

Scan the QR code
for tickets





AMI FARROW - LIGHTING DESIGN

Ami Farrow is an Edmonton-based theatre designer. Originally from Saskatoon, she moved to Edmonton in 2005 to pursue a Masters of Fine Arts at the University of Alberta. When Ami first moved to Edmonton, Theatre Network's Nextfest welcomed her into Edmonton's theatre community. Thanks to some of those connections, Ami also designs lights at Shadow Theatre including productions like *All the Little Animals I Have Eaten* and *Happy Birthday Baby J*. During the pandemic years, Ami began learning the exciting world of video design and live streaming as a resident designer with Theatre Prospero. She worked on the conceptualizing and then video design of *Creature in the Dark*, a live-stream shadow puppet show. She had the opportunity to help transition *Enchanted Antlers* and *Rocko and Nakota* from the touring live versions to live stream versions. Ami also collaborates with the vibrant South Asian dance community in Edmonton, and also works as a stage manager, lighting designer and dancer with Luna Dance Fusion. Ami is a Theatre Production instructor at the University of Alberta. She loves to dance, create textiles and raise her two darling children.



BRIAN MAXWELL - PRODUCTION MANAGER

"Live It Live" has been the way of living for as long as I can remember. Dancer of Vagnova Ballet, and several Ukrainian Dance troops from across Western Canada, Musician, Artist, Creator/ Builder of anything that can be asked for. I've spent as much time on stage as behind it. As a Live Sound Designer and Operator I've had the great opportunity to work with the amazing Canadian independent theatre and music scene as well as the top regional theatres and venues. Producing theatre and music for the masses has always been an important part of life. From the street to the seat, art is live and everywhere it is meant to be lived.



GINA MOE - STAGE MANAGER

Recent Stage Manager: *Titus Buffonicus*, *The Empress & The Prime Minister*, *The Last Five Years*, for Theatre Network; *Pride and Prejudice*, *Almost a Full Moon*, and *The Colour Purple*, for the Citadel Theatre; *Orphee +*, *My Last 100 Years*, and *La Bohème* for Edmonton Opera, *10 Funerals*, and *Bloomsday* for Shadow Theatre, *The Pansy Cabaret* for Guys in Disguise; *A Grand Time in the Rapids*, and *Evelyn Strange*, for Teatro la Quindicina; *The Fiancee*, and *Glory* for Chemainus Theatre; *Metronome* and *Witch Hunt* at the Strand for WWPT; *Craniatrium* for Firefly Theatre; *Enchanted April*, *The Retreat From Moscow*, and *Trying* for Theatre Calgary. Gina is a two-time winner of the Elizabeth Sterling Haynes award for Outstanding Achievement in Production.

OPENING NIGHT



POCHSY IV
Written & Performed by Karen Hines
Opening Night - October 19, 2023
Photos by Eric Kozakiewicz





NICODEMUS HEIN - CARPENTER/LIGHTING TECHNICIAN

Nico was a 2017 graduate of the Theatre Production program at MacEwan University. Since then he has had the opportunity to work on many corporate events, including concerts, AGM's, and conventions, as well as at many of the great festivals here in the province, including Westerner Days, Heritage Days, Thousand Faces Festival, Edmonton International Fringe Festival, and Theatre Network's own NextFest! While lighting has been his main focus, Nico enjoys many aspects of the technical theatre world.



ASHLEY CARTER - VENUE & LIGHTING TECHNICIAN

Ashley (She/Her) has been a full time Theatre & Live Event Technician since 2019. She greatly enjoys all her work, engaging in events such as concerts, conventions, galas, festivals, and, of course, live theatre. From events as small as a mic on a stand to as big as spending a whole week putting together a single day exhibit, there is never a boring day in live events. She is honored to be a part of the incredible Theatre Network team at the new Roxy Theatre!

Ashley believes that art, in all of its forms, is and should be a place of community, of expression, and of acceptance. Anybody anywhere, no matter their age, language, orientation, experiences, or tastes, can find art that speaks to them, and that's the way it should be. As a member of the Métis Nation of Alberta, Ashley hopes to continue the work this industry has done to create spaces that are inclusive, welcoming, and safe to all members of all communities, by incorporating the Métis values of Unity and Harmony, as well as honoring Tatawaw, the Cree phrase meaning "Welcome, there is room".



WILL CHICHAK - CARPENTER/RUNNING CREW

Will Chichak is a stage carpenter and technician based in Edmonton, Alberta. Graduating from MacEwans University's Theatre Production Program Will took part in "Nice Work if You Can Get It" and "The Drowsy Chaperone" from 2016-2017. Will has moved on to building with a multitude of theatre company's in the region, having the opportunity to build sets on stages all over the city. Recently building Theatre Networks productions of *Sexual Misconduct of the Middle Classes* and *With Bells On*.



JADEY CAPALDO - CARPENTER/LIGHTING TECHNICIAN

Jadeda (Jadey) has been working in theatre for the past 3 years. She recently graduated from MacEwan University's Theatre Production Program, and had been involved with numerous productions since. Jadey works as a technician for multiple different theatres throughout Edmonton, but primarily spends her time working as a lighting, video, and audio technician here, at the Roxy Theatre, and at the Fringe Arts Barns. Jadey is very grateful to be a part of a team that works so hard to bring beautiful pieces of art into this world, and she hopes you enjoy watching this show as much as she does!



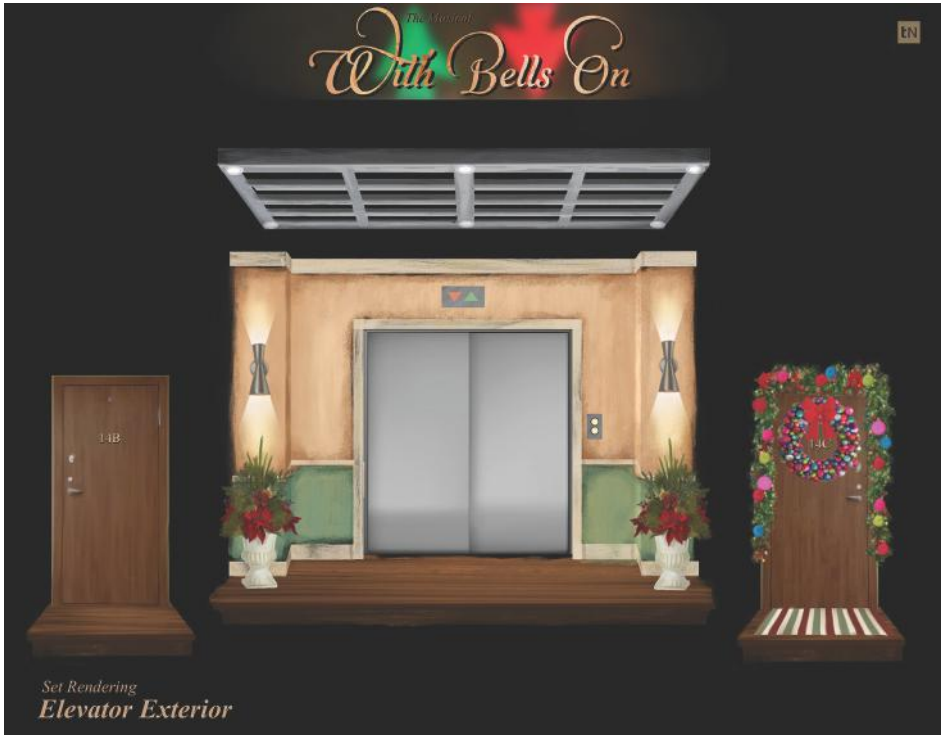
AMELIA CHAN - AUDIO TECHNICIAN

Amelia Chan is an Edmonton-based sound technician, stage hand, sound engineer, sound designer and musician who has recently fully immersed herself in the live sound aspect of the Edmonton arts scene. Originally learning how to record, mix and master at Victoria High School, Amelia gained a greater understanding of sound. She continued learning about music and sound at MacEwan University through the Bachelor of Music Program from 2020-2023. She graduated with a diploma in music composition in the 2023 fall semester. Amelia has had the pleasure of working at a number of festivals and venues throughout the city including CO*LAB, The Roxy Theatre, Next Fest, Edmonton Folk Music Festival, Deep Freeze Festival (Byzantine Winter Festival), Skirts Afire, Another Festival, Thousand Faces Festival and Edmonton International Fringe Festival. She's also worked with Carter-Ryan Gallery and Live Theatre in Banff and Canmore. Amelia made her debut as a sound designer with Northern Light Theatre's 2023 production of *A Phoenix Too Frequent*. She is so thankful for the amazing independent music and arts industry in Edmonton that has encouraged and mentored her, and has helped her build her skills and abilities.



ANDRAYA DIOGO - APPRENTICE STAGE MANAGER/ASSISTANT SET & COSTUMES DESIGNER

Andraya (she/her) is an emerging queer artist from amiskwaciwāskahikan (colonially known as Edmonton). She works as a freelance stage/production designer/manager most interested (currently) in abstract, conceptual stage design, and good, clean paperwork. Recently, Andraya has been branching out into film, music, and dance while finishing her BFA in Theatre Production at the University of Alberta, which she will graduate from this April. PREVIOUS: *Flashback* Documentary (Tangerine Productions LTD) as Assistant Art Director, *Sexual Misconduct of the Middle Classes* (Theatre Network) as Associate Production Designer, and *The Hooves Belonged to the Deer* (In Arms Theatre Collective) as Assistant Stage Manager. Headshot credit to Kaylin Schenk. Love to Gina and Brianna. PORTFOLIO: @andrayadiogo on Instagram.



Set Rendering
Elevator Exterior

Set rendering by Brianna Kolybaba



THEATRE NETWORK STAFF

ARTISTIC DIRECTOR

Bradley Moss

TN SUMMER ACADEMY DIRECTOR & NEXTFEST FESTIVAL DIRECTOR

Ellen Chorley

CURATOR & DIRECTOR, VISUAL ARTS PROGRAMS

Jared Tabler

MANAGING DIRECTOR

Harley Howard-Morison

DIRECTOR OF PRODUCTION & FACILITY

Brian Maxwell

BUSINESS DEVELOPMENT DIRECTOR

Jill Roszell

OPERATIONS MANAGER

Nelly Song

INTERIM OPERATIONS MANAGER

Kate Couture

COMMUNICATIONS MANAGER

Crystal Eyo

@ROXY124STREET SOCIAL MEDIA

Ellie Heath

BOOKKEEPER

Jennifer Brownridge

HEAD TECHNICIAN

Ashley Carter

ART GALLERY TECHNICIAN

Steven Teeuwesen

FRONT OF HOUSE LEADS

Candice Stollery

Even Gilchrist

Kate Couture

FRONT OF HOUSE

Asia Weinkauf-Bowman

Aran Wilson-McAnnally

Mackenzie Tennesen

Neon

Sheena O'Connor

Trevor Duplessis

THEATRE NETWORK BOARD OF DIRECTORS

PRESIDENT & CHAIRMAN OF THE BOARD

Jared Tabler

VICE PRESIDENT

Marianne Stewart

TREASURER

Lenka Stuchlik

SECRETARY

Greg Zinter

BOARD MEMBERS

Lewis Cardinal

Jody Peck

Briana Miller



The Fruit Loop Society of Alberta is delighted to support the holiday-themed production of "With Bells

On". Starring the talented and iconic (and Edmonton-raised!) Zachary Parsons-Lozinski, this production promises to celebrate joy, inclusivity, and the spirit of the holiday season.

At Fruit Loop, we champion community power, uniting to create magic in Alberta's 2SLGBTQIA+ community. What began as pop-up mixers in 2013 has evolved into a social enterprise prioritizing people and community. Through dynamic partnerships and stellar parties, we empower local artists, organizations, and entertainment venues.

We spotlight vibrant queer art with microgrants (ranging \$250-\$2,000) for diverse productions, fostering voices at the Edmonton Fringe Festival. Fruit Loop events



go beyond a night out, pushing event programming boundaries for a good cause. Profits support 2SLGBTQIA+ organizations like HIV Edmonton, Jasper Pride, and more.

Believing in the strength of partnerships, we've teamed up with SeaChange Brewing for Prairie Fairy beer, backing the 2SLGBTQ+ community financially. Our recent collaboration with Cannabis for Good brings the Pride Pack pre-rolls, redirecting cannabis profits to positive social causes.

Together, we catalyze change, challenge norms, and create an environment where love, self-expression, and creativity know no bounds.

From our Fruit Loop family to yours, Happy Holidays!

THANK YOU!

As a registered charity, Theatre Network Society plays an important role in Edmonton and Canada's theatre ecology. Support from our community means we can continue to employ local professionals to create the challenging, engaging, and risk-taking theatre you see on our stages. As a medium-sized company that takes pride in "punching above our weight," your donation to Theatre Network goes further than you may think.

OPERATIONAL DONATIONS

Your gift to Theatre Network's ongoing operations will go directly to where we need your support most: our productions.

Every dollar we raise is used to support: playwright and artist commissions; artist wages; production expenses; emerging artist programs through our sister company, Nextfest; TN's Summer Academy for high school students, and more. Operational Donations allow us to maintain an affordable ticket price so everyone can enjoy live theatre.

CAPITAL CAMPAIGN DONATIONS

Nearly eight years after the devastating fire at the original Roxy Theatre, Theatre Network has come home. We're closer than ever to reaching our goal of raising \$12M for The Roxy rebuild.

Your support of our Capital Campaign goes towards The Roxy rebuild and equipment purchases. Through to the end of our 2023 season, your support will be acknowledged in the following ways:

- \$100 or more will receive a limited edition ROXY pin.
- \$1000 or more will receive recognition on our Builders' wall.
- There are naming opportunities available for large gifts of over \$15,000 (subject to availability). Please connect with Bradley Moss, Artistic Director, at brad@theatrenetwork.ca or 780.453.2440 for more information).

Art Gallery Donations

Theatre Network's newest year-round undertaking is our visual art programming in The Roxy's Miller Art Gallery. Your donation to the art gallery will support exhibition costs, as we welcome many different artists and styles each season.

Theatre Network Society is a registered charity, number 119214302 RR0001. Donations of \$20 or more will receive a charitable tax receipt.



NEXTFEST 2024

May 30 to June 9, 2024

Festival Director:

Ellen Chorley

Festival Producer:

Kena León

Nextfest was created out of the need to support the voice of the emerging professional artist, a place where the young artist was nurtured. Like any occupation, you cannot get opportunities until you get the experience, a twenty-something loop that is hard to break. Nextfest is a multidisciplinary festival where artists from different fields develop relationships, a meeting place to exchange ideas and grow. What we did not realize is that what Nextfest is truly doing is building our artistic community.

THEATRE NETWORK VOLUNTEERS

Ann McCluskey
 Ash Howard
 Bob Morter
 Chris Pederson
 Dana Mauer
 Darlene Elias
 David Couture
 Elva Rice
 Gail Kelly
 Gloria Carr
 Hitomi Suzuta
 Ingrid Pederson
 Jacquie Skeffington
 Jim Smibert

Joan Damkjar
 John Brisson
 Judy Collister
 Judy & Leland McFerran Stelck
 Kate Hobin
 Kendall Saunders
 Linda Smibert
 Louise Mallory
 Maria Basaraba
 Marie Fontaine
 Marion McFall
 Melinda Coetzee
 Meredith Black
 Nicole Bouclin-Graves

Patrick Houston
 Pepsi Caparelli
 Rita Klasson
 Sarah Yue
 Sari Haas
 Shannon Joyce
 Sue Quon
 Sue Sohnle
 Susan May
 Theresa Agnew
 Veronica Keuchel
 Walter Kehl

Volunteers play an integral role at Theatre Network and The Roxy in welcoming patrons and assisting our Front of Staff in the smooth operation of the theatre. Thank you for your help!

Interested in joining our volunteer team? Call or email Operations Manager, Nelly Song (780.453.2440 or volunteers@theatrenetwork.ca) for a volunteer application form.



THEATRE NETWORK DONORS

OPERATIONAL & CAPITAL CAMPAIGN DONORS

As of Nov. 22, 2023

Aaron Casselman
 Aaron Wicks
 Adam Bentley
 Adam Lemay
 Adrian Jones
 Aimée Hill
 Ainsley Hillyard
 Al & Ruth Jamison
 Alan Besecker
 Alan du Heaume
 Alberto Reyes
 Alice Colak
 Alison Wells
 Allyson Jeffs
 Alvin Schrader
 Alyson & Mark
 Connolly
 Amanda Clark
 Amanda Lindberg
 Amy Abbott
 Amy Defelice
 Anastasia Maywood
 Andrea & George
 Pheasey
 Andrea Danko
 Andrew Jarema
 Andrew Keddie &
 Susan Berry
 Andrew Sims
 Andrzej Goralczyk
 Angela Ferreira
 Angelina Bakshi &
 Dr. Tejas Sankar
 Angie E. Laberge
 Ann McCluskey
 Anna Vesala
 Anne & Jay
 Summach
 Anne and Peter
 Bailey
 Anne Broomfield
 Anne F Nothof
 Anne Greenling
 Anne Magusin
 Anne Packer
 Anonymous
 Anthony Ashley
 April Banigan and
 Sean Sanders
 April Killins
 Arine Roszell
 Arliss Miller

Aroon Sequeira &
 Ellen Sitrler
 Aruna Srivastava
 Ash & Harley
 Howard-Morison
 Ashwani Singh
 Audrey J Whitson
 Averie & Carman
 McNary
 Barbara & Richard
 Johnstone
 Barbara and Gurston
 Dacks
 Barbara Beirnes
 Barbara Funk
 Barbara Galm
 Barbara Hauck
 Barbara Keates
 Barbara Mah
 Barbara Schweger
 Barry & Maureen
 Schloss
 Barry Schloss
 & Maureen
 Hemingway-
 Schloss
 Bella Moss
 Bente Roed
 Bernice Gordeyko
 Bernie McCracken
 Beth Dart
 Beth McLachlan
 Bethany Hughes
 Betty & Mike Gibbins
 Betty Grudnizki
 Betty Jean Boyd
 Betty-Lou Hushlak
 Bev & Jack Edwards
 Beverley Williams
 Bevin Dooley
 Bill & Eva Colmers
 Bill Kiel
 Bill Patrick
 Bill Peterson
 Bill Sage
 Bill Schepanovich
 Billy Brown
 Birgitta Larsson
 Blaine Newton
 Bluma Goldberg
 Bob Pooley
 Bob White
 Bob Yamamoto
 Bob Zukerman
 Bonnie McDonald
 Bonnie Patterson-
 Payne
 Bonnie Titford
 Bradley Moss

Brenda Barton
 Brenda Meier
 Brent
 Christopherson
 Brett Blackwell
 Brian & Elaine
 Crummy
 Brian Deedrick
 Brian Dooley &
 Penny Ritco
 Brian Haliburton
 Brian Kropf
 Brian Maier
 Briana & Jonathon
 Miller
 Bridget Toms
 Brittany Deiter and
 Lonnie Pilkington
 Bruce & Carol
 Bentley
 Bruce Johnson
 C.J. Romaniuk
 Candace Korchinsky
 Candice Stollery
 Carla Stolte
 Carlean Fisher
 Carlene Dennis &
 Ronnie Wilson
 Carlos Cervera
 Carol & Thomas
 Auston
 Carol and Andrew
 Raczynski
 Carol Marshall
 Carol Pawlenchuk
 Carolyn Campbell
 Carolyn Nielsen
 Catherine MacLean
 & Earl Reaburn
 Cathi Bishop
 Cathy Clement &
 Martin Grasdall
 Cathy Mayhew
 Cathy Roy
 Catrin Owen & John
 Sumner
 Cecily Mills
 Céline Gareau-
 Brennan
 Chandos
 Construction
 Charles Schroder
 Chelsea Armstrong
 Chereda Bodner
 Cherilyn Porter
 Cheryl Cox
 Cheryl Kirk
 Cheryl Lieberman
 Chris Henderson

Chris Sharek
 Chris Underwood
 Chris Vazquez
 Christa Teskey
 Christina Harbak
 Christine A. Prokop
 Christine Chomiak
 Christine Dirksen
 Christine Lesiak
 Christine Prokop
 Christopher Head
 Chuck & Tracey
 O'Connor
 Cinders Fund
 Cindy B. Lee
 City Image Signs
 City Lumber
 Cliff & Diane Gervais
 Cliff Hansen
 Clyde Hurtig & Karen
 Farkas
 Colleen & Kyle
 Murray
 Colleen & Mark
 Stratton
 Colleen Harris
 Colleen Maykut
 Colleen McGinnis
 Colleen Murphy
 Colleen Wiens
 Collin Doyle & Lora
 Brovold
 Concrete Theatre
 Conni Massing
 Connie Edwards
 Cory Marshall
 Craig & Mark
 Stumpf-Allen
 Craig Neuman
 Cristina Stasia
 Crystal Eyo
 Dale Ladouceur
 Daniel & Rhonda van
 Heyst
 Daniel Stavert
 Daniela Masellis
 Danielle Cotteau
 Danielle Fuller
 Darcy Hoover
 Darlene Wright
 Dave Fisher
 Dave Forest
 Dave Sutherland
 David Cheoros
 David Hennig &
 Denise Sawchyn
 David Margolus
 David Norwood
 David Prestley

David Segatto
 David Wolkowski
 Dawn & Jim Allan
 Deb Brostrom
 Deb Feisst
 Deb Guittard
 Deb Schellenberger
 Debbie Giesbrecht
 Debbie Litven
 Deborah Ethier
 Deborah McElrath
 Deborah Smart
 Debra Lieberman
 Dee Cartledge
 Del Dilkie
 Denise Roy
 Dennis & Donna
 Hutton
 Dennis Vass
 Derek Truman
 Desmond Chow
 Devika & Douglas
 Short
 Diana Stevenson
 Diane Buchanan
 Diane Davies &
 Doug Vokins
 Diane Zinyk
 Dianne & James
 Johnston
 Dianne Johnstone
 Dianne Westwood
 Dolores Dilkie
 Dom Royko
 Don Armstrong
 Don Brown
 Don Dickson & Paul
 Melancon
 Don Watson
 Donna Dempster
 Donna McKay
 Donna McWhinnie
 Donna Stewart
 Donna Stonehocker
 Doreen Pielh
 Doug Densmore
 Doug Mertz and
 Stefano Muneroni
 Doug Short
 Douglas Oakley
 Dr Cathy Flood and
 Dr Harold Chyczij
 Dr. Hsing Jou
 Professional
 Corporation
 Dr. Leyland Adams
 Duane Mills
 E Ross Bradley

Earthscape Consultants	Glasses Half Full Glenda Stirling	Jan Taylor Jane Lanskail-Stefure	John Towill John Yamamoto	Ken & Maria Evans Keri Mitchell
Edward Johnson	Gloria Hawkey	Jane Zakreski	Jon Hall	Key Trueblood
Elaine Solez	Gloria Olchoway	Janet Boyes	Jonathan Hamill	Kevin Mott
Eleanor Olszewski	Rozeboom	Janet E Smith	Jordan Mair	Kim A. Reschenthaler
Elizabeth Hall-Petry	Gordon & Diane	Janet Hardy	Josh Miller	Kim Chaisson
Elizabeth Kelly	Buchanan Family	Janet Kostek	Joyce Burnett	Kim Kelly & Rufus Scrimger
Elizabeth Manuel	Foundation	Janice MacDonald	Joyce Tustian	Kimberly Creller
Elizabeth McAfee & Douglas Oakley	Gordon Gow	Janice Manuel	JP Fournier	Kris Loranger
Elizabeth Smythe	Graham & Maria Hicks	Janice Rockwell	Judy & Tom Peacocke	Krista Gilliland
Ellen Brown	Grant Cameron	Janice Ryan	Judy Soper	Kristen Mackenzie
Ellen Chorley	Greg & Joanne Zinter	Janis Leggo	Judy Unwin	Kristofer DeGraw
Elva Rice	Gwen Gray	Janis Sasaki	Judy Ustina	Lana M. Hughes
Elwood Johnson	Heath Birkholz	Jared Tabler	Julia & Tony Nelson	Lana Fitzgerald
Emery Jamieson LLP	Heather Chorley	Jason Desaulniers	Julie Lloyd	Laura Kennett
Emily Herdman	Heidi Looby	Jayne Bawden	Julie Sinclair	Laurel Archibald
Emily Pole	Heidi Robinson	Jean & Frank Greenough	Julie Snowdon	Laurel Archibald on Behalf of Anne Archibald
Emmy Stuebing	Heights Residential Window Cleaning & More	Jeff Talbott	Justine Chambers & Randy Bazar	Laurel Gauld
Eric Papsdorf	Helen Lightfoot	Jeffrey Pearson	Kaelan William Traub (ECF)	Lauren Brown
Erin Newell-Lupien	Hendrick Kalkman	Jen Peebles	Kara Little	Laurie Anfindsen
Ernest & Lucille Walter	Hilary Wynters	Jen Shelley	Karen Bain	Laurie Bahniuk
Esjay Lafayette	Holly Tkachuk	Jennifer Hawkins	Karen Buchanan	Laurie Collins
Esther Lieberman	Howard & Nanette Spragins	Jennifer Mikula	Karen Farkas & Clyde Hurtig	Laurie MacFayden
Esther Ondrack	Hu Young	Jerry & Linda Hartley	Karen Glauser	Leander & Sandra Turner
Eva and Harold Parlee	Imran Ahmad	Jessica Glover	Karen L. Johnson	Leanne Dekker
Eva Weisz	In Memory of Al Parsons	Jessica Heine	Karen MacArthur	Leanne McGeachy & Eric van Walsum
Fabio Guarducci	In Memory of Edward John Kozakiewicz	Jill Ann Howell- Fellows	Karen MacKenzie	Lee Anna Rocchio
Farrel Shadly Q.C. & Lisa Miller	In Memory of Jeannie Jamieson	Jill Gamez	Karen McDougall	Leila Raye-Crofton
Fawnda Mithrush	Ingrid & Chris Pederson	Jill Roszell	Karen Porkka	Lenka Stuchlik
Fay Orr	Iris Barrington Leigh	Jill Stuchlik	Karen Redford	Lenora Pilkington
Fern Snart & Gerry Kendal	Isobel Mailloux	Jillian Yamamoto	Karen Schmitke	Lesley Akst
Fiona Williams	J Mah	Jim & Laurette Setterlund	Karl Smith & Donna Read	Lesley Howard- Stafford
Frame 30 Productions	Jackie Foord	Jim Delaney in Memory of Frances Delaney	Karla Horcica	Leslie & Steven McDougall
Fran & Al Olson	Jacqueline Wallis	Jim Johnston	Kat Veeman	Leslie Abbott
Fran Blake	Jacquelyn	Jim McCoy	Kate Holowach	Leslie Morgenstern
Franco Melone	Skeffington	Joan & John McDonald	Kate Pronovost	Lewis Cardinal
Gail Fournier	Jacquie Woods	Joan Heys Hawkins	Kate Ryan	Lexa Shropshire
Gail M M. Yakemchuk	James & Gail Defelice	Joan Melvin	Katerina Carastathis	Leyland Adams
Garett Spelliscy	James Freeman	Joan Pitfield	Katherine Caine	Liam Mackenzie
Garry Chmara	James Friedman	JoAnn Jones	Kathryn Anne Ivany	Liane Faulder & Terry Daniel
Garry Riesz	James Iwasuk	Joanne & Greg Zinter	Kathryn McHan	Linda Callaghan
Gary & Linda Poignant	James Johnston	Joanne Howe	Kathy & Lorris Williams	Linda Hartley
Gary Meiklejohn	James Kurkiewicz	Joanne Hugo	Kathy & Michael D. Harvey	Linda Howell
Gavin Bradley	Jan Jackson	Jody & Ken Peck	Kathy Carter	Linda Miller
Gaye Wiggins	Jan Selman	Joe & Marta Collier	Katie Mabbutt	Linda St. Onge
Georgina Schurman		Joel Magalnick	Katy Yachimec- Farries	Linda Wedman
Gerald Sutton		John 'Sandy' A. McCubbin	Kay Christopher	Linda Wood Edwards
Gerhard Henkemans		John & Pat Gillespie	Keith Warner	Lisa & Corey Smith
Gerry Kendal		John & Sharron Sissons	Kelly & Fred Deis	Lisa Beebe
Gina & Edita Vavak		John Day	Kelly Kercher	Liz Allison-Jorde
Gina Moe & Ian Jackson		John Hudson	Kelly O'Shea	Liz Greenaway
Gina Puntill		John Quinn	Ken & Connie Marshall	Lois Sorgen
Gina Roline		John Simpson	Ken & Kathleen Johnson	Lori M. Marianicz
Gina Roline		John Sinclair		Lorie Garrity
Gina Roline				Lorna Thomas
Giuseppe Albi				

Lorne Cardinal	McCoy Family	Paul & Mary Anne	Sara Davidson	Teresa Stokes
Lorne Merrick	Foundation	Vanderham	Sara Norquay	Terri Aihoshi
Lorraine Fagan	McQueen Creative	Paul Manuel & Doug	Sarah Crummy	Terry Olson
Lorraine Woollard &	Melanie Bahniuk	Ramsey	Sarah Jensen	Terry Soroka
Mitch Davidson	Merle Harris	Paul Nahirney	Sari Haas	Terry Venuti
Louella Janzen Pick	Merrin Michel Nuc	Peggy & Martin	Sari Salmon Schiff	The Dolgoy Family
Louis Lieberman	Michael Buhr	Ferguson-Pell	Scott Peters	The Dr. Dasha
Loveth Bradley	Michael D. Harvey	Penny & Niels	Seham Chadi	Goody Memorial
Lydia Cotsapas	Michael Gormley	Frederiksen	Senia Tarrabain	Foundation
Lynda Martell	Michael Gormley	Penny Omell	Shama Noone	The Felzjen Family
Lynette Kuchera	Michael Harvey	Peri Henderson	Shane Nickolson	The Honourable
Lynn & Stephen	Michael Kennard	Peter Breen	Shanni Pinkerton	Darlene Acton
Mandel	Michael Kreuzer	Peter Dobbie &	Shannon O'Byrne	The Newell Family
Lynne Falconer	Michael Phair	Janet Rowlands	Sharon & Dennis	Foundation
Lynnette Kuchera	Michele Toma	Peter Goodwin	Nowicki	The Roed Family
Maggie & John	Michelle Opatril	Peter Heyes	Sharon Au	Foundation
Mitchell	Mike and Yvonne	Peter Jarvis	Sharon Schooler	Theresa Agnew and
Maggie Barton Baird	Stern	Peter Morley	Sharon Wilcer	Dave Buchanan
Malcom David	Milltech Millwork Ltd	Peter Priestley-	Sheila Greckol	Theresa Zip
Hennig	Molly Warring	Wright	Sheila Tingley	Tim Paetkau
Maralyn Ryan	Monica Barclay	Peter Wright	Sheldon Elter	Tina Chadwick
Marc Chalifoux	Monica Danielle	Philip Hackborn	Shelley Martin	Todd Ferguson
Marc Horton	Gate	Philip Nash	Shelley Smith	Todd Opatril
Marcia Bercov	Monique McKenna	Piet Defraeye	Shelly Robichaud	Tom Collier
Marg Armstrong	Muriel & Edgar Toop	Pieter Zeeuwen	Shirley Tran	Tom Peacocke
Margaret Ballantyne	Myrna Kostash	Randy Boissonault	Simone A. Medina	Tom Reel
Margaret Davidson	Myrna Neilson	Rapid Fire Theatre	Polo	Travis Metzger
Margaret Hrychuk	Nadien Chu	Reanna Pilkington	Simone Gareau	Trevor Hildebrand
Margaret Lee	Nancy Bergeron	Rebecca Ings	Sine & Seham Chadi	Trevor Zimmerman
Margaret McVea	Nancy Byway	Richard & Rhonda	Sol & Marilyn	Val Blanch
Margaret Morley	Naomi Mahaffy	Day	Rolinger	Val Lefebvre
Margaret Pointen-	Natalie Ozipko	Richard Maranchuk	Sonia Varela	Valda Roberts
Willms	Nathan Cuckow	Rick Woolsey	Soonie Lysons	Veronica Keuchel
Margery Brown	Nathan Smith	Rita Klasson	Stacy Usyk	Vicki and Joseph
Maria Sharpe	Neil Gower	Rita Wood	Stephanie Wolfe	Vaitkunas
Marianne & Kent	Neil Lang	Robbie Norquay	Stephen Faust	Victoria de Jong
Stewart	Neil Oliver	Robert & Judith	Stephen Healey &	Virginia El-Zorkany
Marianne	Nelly Song	Shuttleworth	James Tyler Irvine	Vivian Binnema
Copithorne	Netta Phillet	Robert Barrett	Steve Bates	Vivien McCoy
Marie Bootsman	Nick Trovato	Roberta Wildgoose	Steve Piro	Wally Mctavish
Marie Slusar	Nicole Bouclin-	Roger Helfrick and	Steven & Charlene	Warren Sarauer
Marilyne Goudreau	Graves	Guy Milner	Sinclair	Wayne Wai
Marina & Ed Masson	Nicole Moeller	Roger Scott	Stew & Sheila	Wendy & Charles
Marjan Evans	No Problem	Roger Thomson	MacDonald	Harley
Mark James Kruger	Productions	Roman Augustyn	Sucker Creek First	Wendy & Ken
Marlene Moleski	Norene & Bob Tchir	Ron & Gloria	Nation	MacDonald
Marlene Puffer	Norma Davison	Chalmers	Sue Huff	Wendy Birch
Marshall Shoctor	Norman Homeniuk	Ross Jamieson	Sue Quon	Wendy Hollo
Marthe Murphy	Nykie Starr	Roy Jefferson &	Susan Bauer	Wendy Koenig
in Honour of Vj	Othelia Jenkins	Barrie Stinson	Susan Campbell	Wendy Magee
Harney	Paige Simpson	Ruby & Leonard	Susan Cubitt	Wendy Miller-
Martin & Peggi	Pamela Forsyth	Swanson	Susan Green	Journault
Ferguson-Pell	Pat Murray	Russ Hewitt	Susan Jamieson	Wesley Ketsa
Mary Anne King	Patricia Babiuk	Ruth Vander Woude	Susan May	Western
Mary Johnson	Patricia Harrish	S Godwin	Susan Rockwood	Management
Mary Linn Sage	Patricia Tempest	Sandi Sherman	Suzi Grimes	Consultants
Mary MacDonald	Patrick Beagan	Sandra & Tom	Sylvia Galbraith	William Bocock
Mary Patullo	Patrick Chorley	Keating	Tammy Horne	William
Maryann & Mitch	Patrick Higgins	Sandra Dawes	Tania Gigliotti	Schepanovich
Sabourin	Patrick McCaw	Sandra Devlin	Tanya Ryga	Woodshed Burgers
Massimo Boninsegni	Patti Swanson	Sandra Houston	Taylor R. Chadwick	Yvonne Yamamoto
Matt Gaudet	Paul & Donna	Sandra Turner	Ted Power	
Matt Schuurman		Sandy Bowhay	Teresa Davis	

THANKS TO OUR SPONSORS AND PARTNERS FOR SEASON 49

OPENING NIGHT



Open since October 2009, Duchess Bake Shop is located on bustling 124th Street in Edmonton, Alberta, Canada. We offer the perfect blend of classic French pastries, like macarons, croissants, and tarts, and Alberta favourites, like brownies and butter tarts. At Duchess we make all of our products daily in-house from scratch—no mixes, no preservatives, no shortcuts. duchessbakeshop.com

HAIR



Since 2000, Propaganda Hair Group has grown to be one of the most prominent salons in Edmonton, guaranteeing quality and professionalism to all of our customers. Over the years, we've always been committed to making our devoted customers look stunning and feel their very best. Contact us and see what our team of qualified professionals have to offer you today! propagandahairgroup.net

DINING CARD

Season pass holders receive 15% off when they dine with our dining partners prior to attending a show at Theatre Network. theatrenetwork.ca

Normand's | 11639 Jasper Ave
Tiramisu Bistro | 10750 124 Street
Three Vikings | 10713 124 Street
Irrational Brewing Company | 10643 124 Street #109
Ashford House Pub | 12026 107 Ave
Woodshed Burgers | 10723 124 Street
Washoku Bistro | 10702 - 124 Street

**SPECIAL THANK YOU
TO OUR MAINSTAGE SPONSOR
IMPERIAL EQUITIES.**



**IMPERIAL
EQUITIES
INC.**

Imperial Equities is a progressive company with an affinity for industrial, commercial and agricultural properties in its targeted Canadian markets.



tHEAtRE
NETWORK



10708 124 Street Edmonton AB T5M 0H1
780.453.2440 | info@theatrenetwork.ca